

3.1.4.1 Calibration curve 1

Table 3.13 Calibration curve data of intra-day one of validation.

Theoretical conc. (ng/ml)	Propranolol Area	Sildenafil Area	Ratio	Measured Conc.	Accuracy %
50	1513	114520	0.0132	54.340	108.68
100	3193	120265	0.0265	97.798	97.80
200	6307	109714	0.0575	198.594	99.30
500	17316	118528	0.1461	487.290	97.46
1000	29741	101657	0.2926	964.517	96.45
2000	62571	106590	0.5870	1923.933	96.20
3000	113668	118999	0.9552	3123.520	104.12

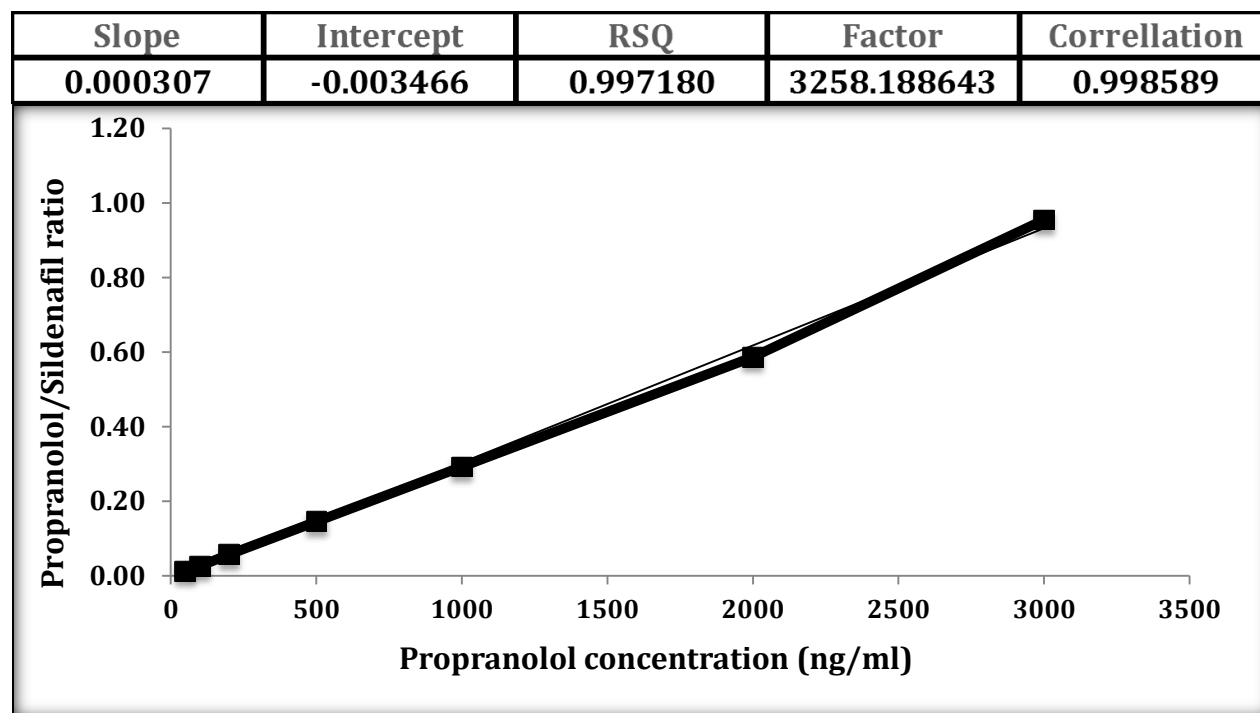


Figure 3.1 Intra-day one calibration curve of propranolol in Krebs buffer.

Measured Conc. = (Ratio + 0.003466) / 0.000307
 Function is $Y = 0.000307X - 0.003466$ ($R^2 = 0.997180$)